

Flexible marine mapping solutions, tailored for your needs

Discover the hidden depths

Ports & Harbours | Renewable Energy | Offshore Minerals | Fisheries & Aquaculture | Planning & Licensing | Disaster Mitigation & Response | Defense & Civil Security


marine by emapsite delivers authoritative data from national Hydrographic offices and other agencies. Coupled with our flexible online services, we can give you the full marine data package:

- » Instant online access with no plug-ins
- » Data available in a GIS format of your choice
- » No need to pay for surplus data - only buy the layer or area you need
- » Wide range of data including the Seabed Digital Elevation Model (available as 1 or 6 arc seconds)
- » Many vector themes available (geology, shipwrecks, elevation, transport, etc)
- » We can offer bespoke datasets, incorporating your own or other suppliers data
- » Licensing options to suit your requirements
- » Flexible web delivery solutions (WMS/WFS)

Currently using another supplier?
UP TO 25% SAVING



 www.emapsite.com

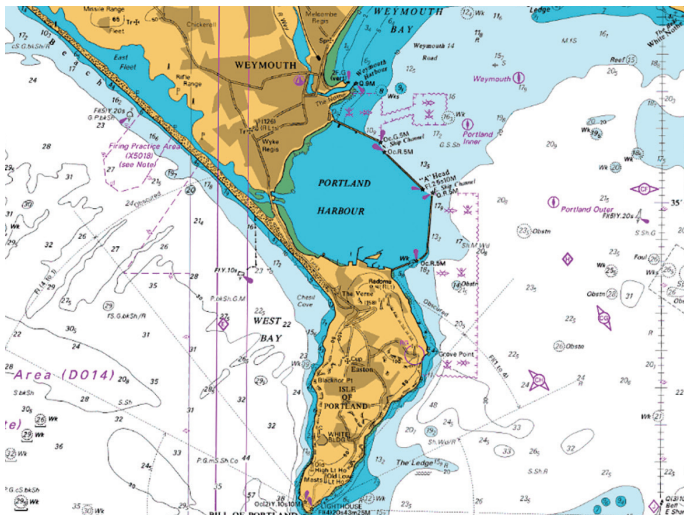
 0118 973 6883

 info@emapsite.com

Flexible marine mapping solutions, tailored for your needs

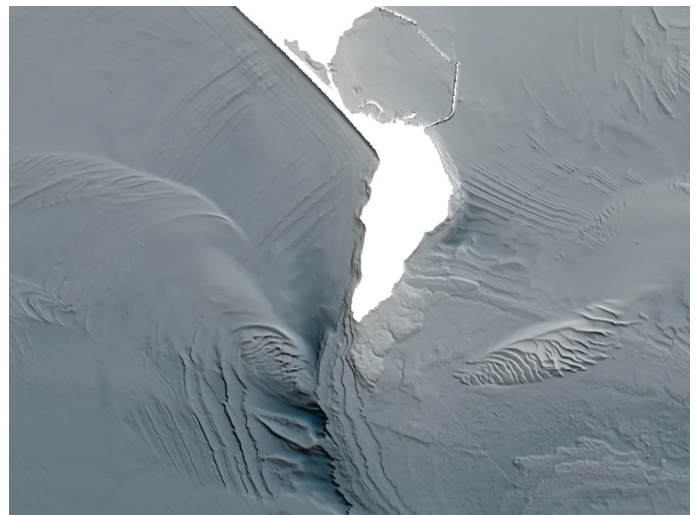
Marine Raster Charts

Familiar nautical chart base map, low cost and ready for immediate use in GIS. Included in the range are small scale charts of seas and regions up to very large scale charts of harbours and ports.



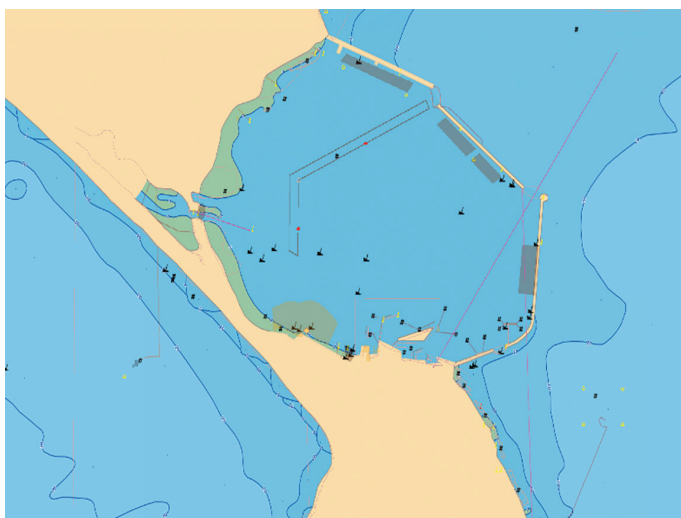
Marine Themes - Gridded Sea Bed DEM

A sea bed digital elevation model (DEM) at 1 and 6 arc seconds utilising single and multi-beam hydrographic survey data from the UK Hydrographic Office and other agencies. Data derived from Electronic Navigational Charts (ENCs) is used to provide additional coverage.



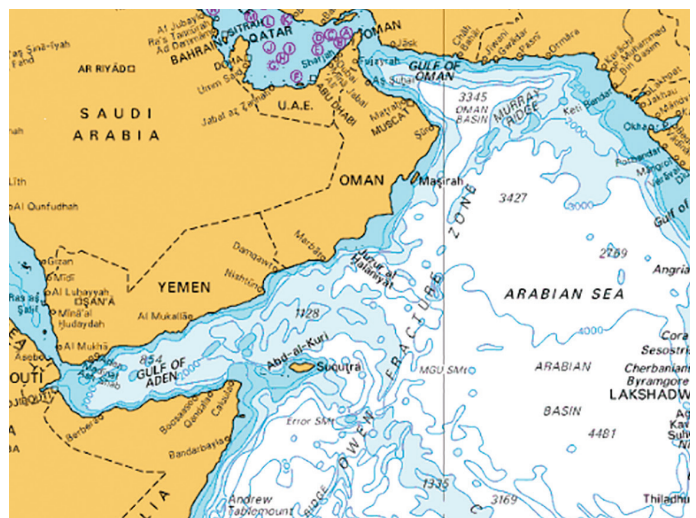
Marine Themes Vector Data

Marine Themes comprises authoritative data from the UK and other Hydrographic Offices, engineered into logical data layers for easy loading and efficient use in GIS. Layers include Elevation, Shipwrecks and Obstructions, Transport, Industrial Facilities Administrative & Management Units, Geographical Regions.




Global Marine Mapping

Marine raster charts at a variety of scales, complete coverage of the world's oceans. UKHO charts are available for selected regions worldwide depending on international agreements. In the absence of UKHO data, other sources from the US and Russia can provide marine chart data in raster format. The US data is published by the National Geospatial Intelligence Agency between 1978-2001, and includes small scale charts of seas and regions up to very large scale charts of harbours and ports.



For more information please visit www.emapsite.com/marine

 www.emapsite.com

 0118 973 6883

 info@emapsite.com

